



Resources to Go Electric

Pamela Leonard
Deputy Director of Marketing & Communications

June 4, 2026

What we will discuss today

- Rebates for heat pump equipment
- Services to help you go electric
- Q&A



Silicon Valley Clean Energy customers receive clean power, competitive rates, and unique offers and services from a locally controlled public agency to create a safer, healthier region.

Locally Governed Board of Directors

George Tyson
Town of Los Altos Hills

Garry Barbadillo
City of Milpitas

Bryan Mekechuk
City of Monte Sereno

Yvonne Martinez Beltran
City of Morgan Hill

Pat Showalter
City of Mountain View

Chuck Page
City of Saratoga

Otto Lee
Santa Clara County

Larry Klein
Chair
City of Sunnyvale

Sally Meadows
Vice Chair
City of Los Altos

Elliot Scozzola
City of Campbell

R "Ray" Wang
City of Cupertino

Rob Rennie
Town of Los Gatos

Zach Hilton
City of Gilroy

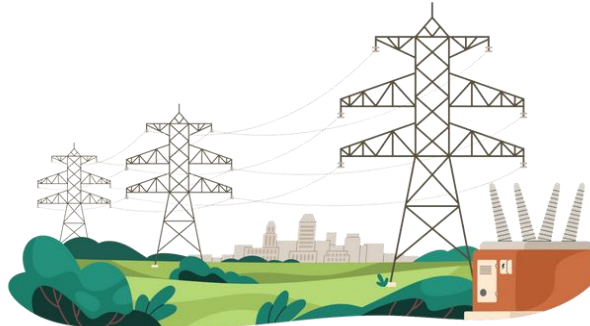


How does it work?



SV Clean Energy

Buying and building energy supplies from clean sources



PG&E

Delivering energy, repairing power lines, billing, servicing customers



YOU

Benefitting from cleaner energy, local control



Results & Impact



Local Reinvestment

Saved all customers more than \$203M in on-bill savings.

\$135M program investments.



Clean Power

More than \$4B committed in 26 long-term contracts for clean power

1,045 MW of renewable power and 2,045 MWh of battery storage.



Accelerate adoption of electric technologies

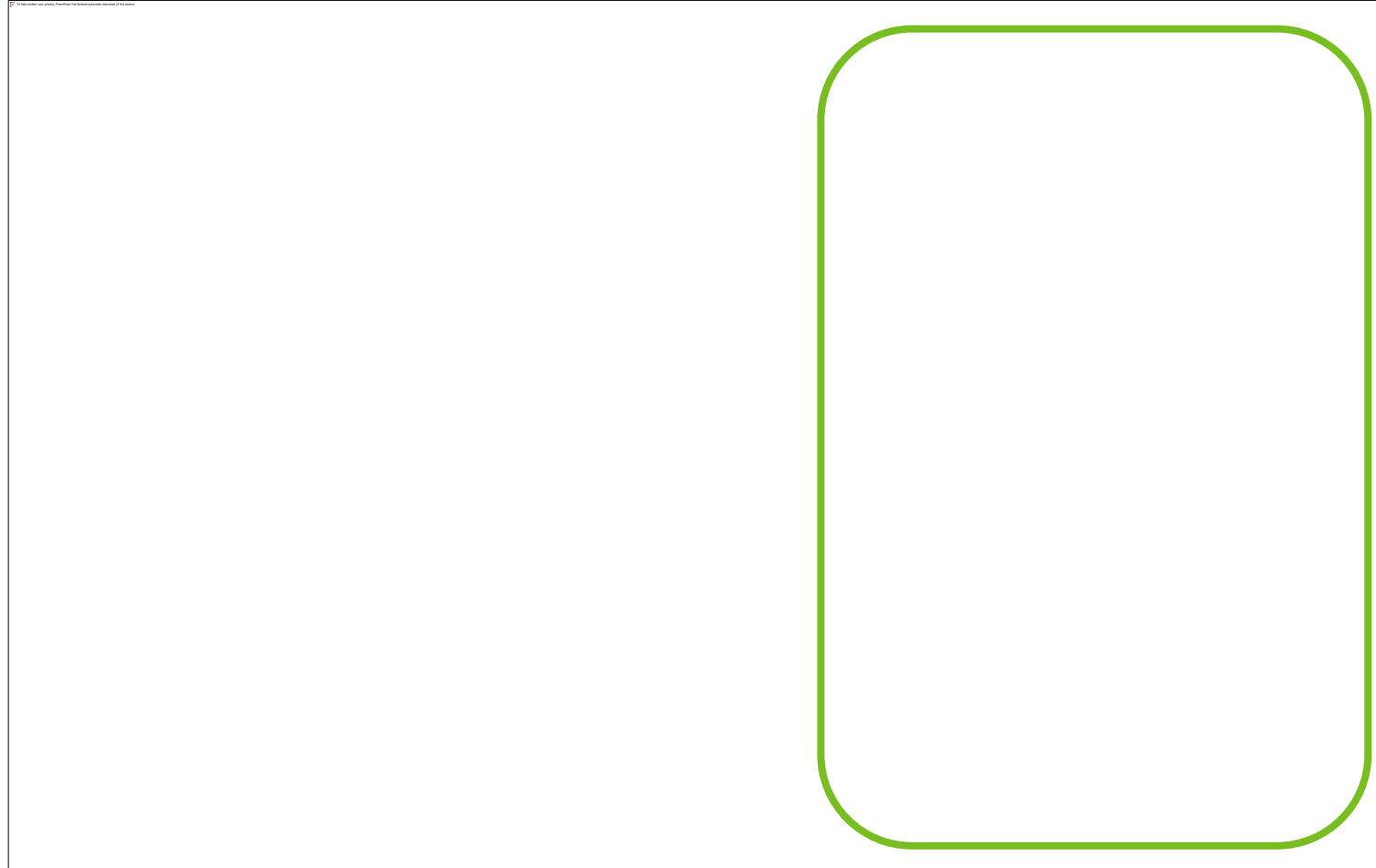
Thousands of rebates issued for heat pump equipment

Installed hundreds of EV chargers at multifamily properties



Helping Customers Go Electric Rebates & Services

Rebates – Heat Pump Water Heater Seasonal Bonus



Heat Pump HVAC Rebates + Sunnyvale Rebate

APPLIANCE		REBATE	
Heat Pump Heating, Ventilation, and Air Conditioning system (HP HVAC)	Replacing gas furnace	\$2,000	
	Replacing electric resistance heater	\$500	
City of Sunnyvale HVAC Rebate	Replacing gas furnace	\$1,000	



Additional SVCE Rebates

APPLIANCE		REBATE	REBATE FOR INCOME-QUALIFIED CUSTOMERS
Induction Cooktop/Range	Replacing gas cooktop/range	\$500	\$750
	Replacing electric resistance cooktop/range	\$100	\$350
Prewiring, wiring and circuit splitter/pauser devices		\$500 per circuit or device, up to \$2,000	\$750 per circuit or device, up to \$3,000

Gas vs. Electric Costs with Rebates

- Electric alternatives often have higher initial costs for water heaters, but rebates help cover the difference
- SVCE [study](#) shows ongoing monthly cost savings with heat pumps!

Heat Pump Water Heater (HPWH)

Cost before rebates

\$6,300–\$7,300

(65-gallon, with 240V circuit and permits)

Cost after rebates

\$0 – \$4,300 ⓘ

Or \$0 if income-qualified

Compare with \$4,300 for gas equivalent

\$6,000–\$7,600

Average lifetime (15-year) energy savings compared to gas equivalent

Heat Pump HVAC (HPHVAC)

Cost before rebates

\$17,500–\$18,500

(3-ton ducted, with 240V circuit and permits)

Cost after rebates

\$11,250–\$16,000 ⓘ

Or \$0 if income-qualified

Compare with \$17,600 for gas equivalent

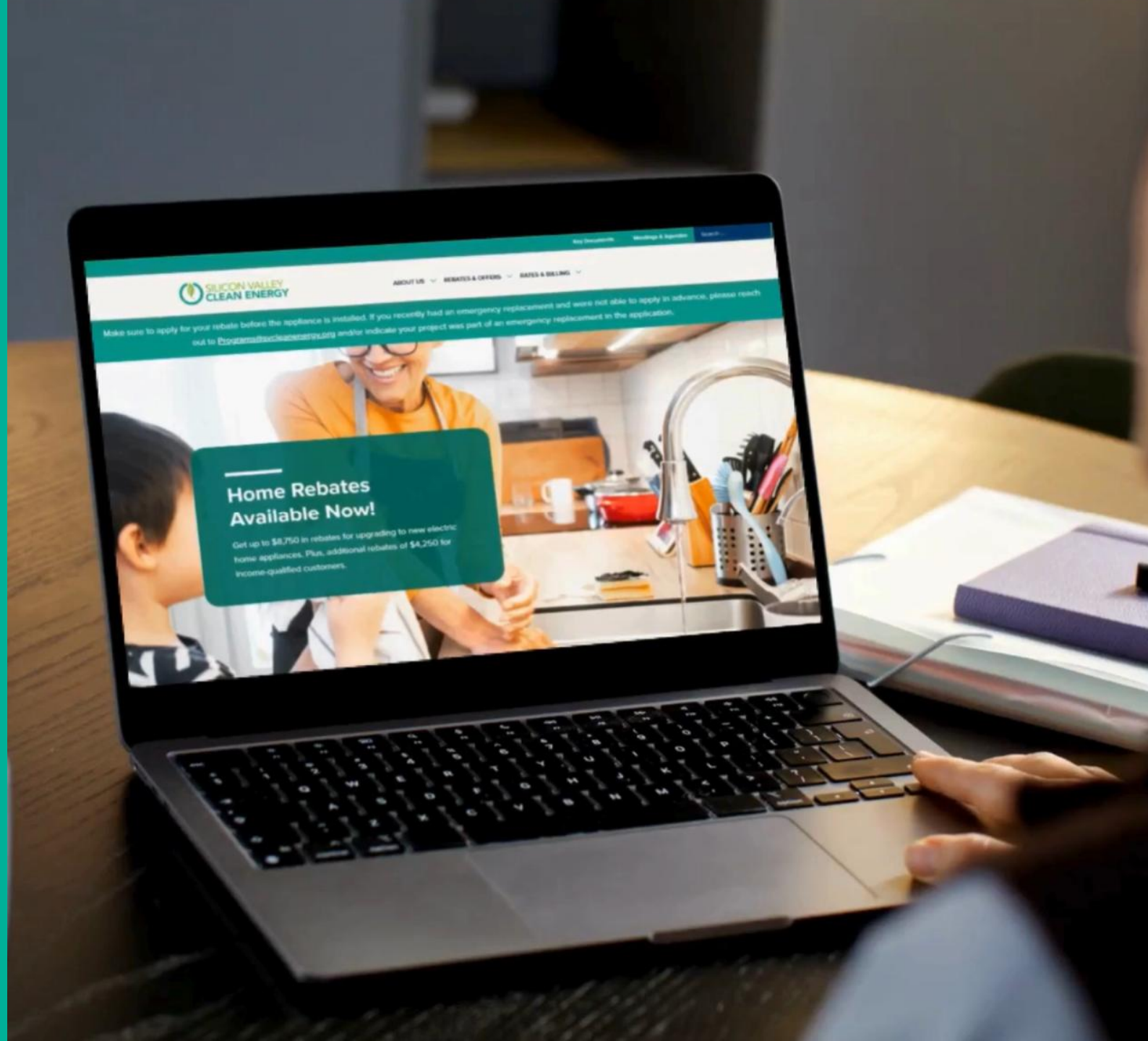
\$6,000–\$8,700

Average lifetime (15-year) energy savings compared to gas equivalent

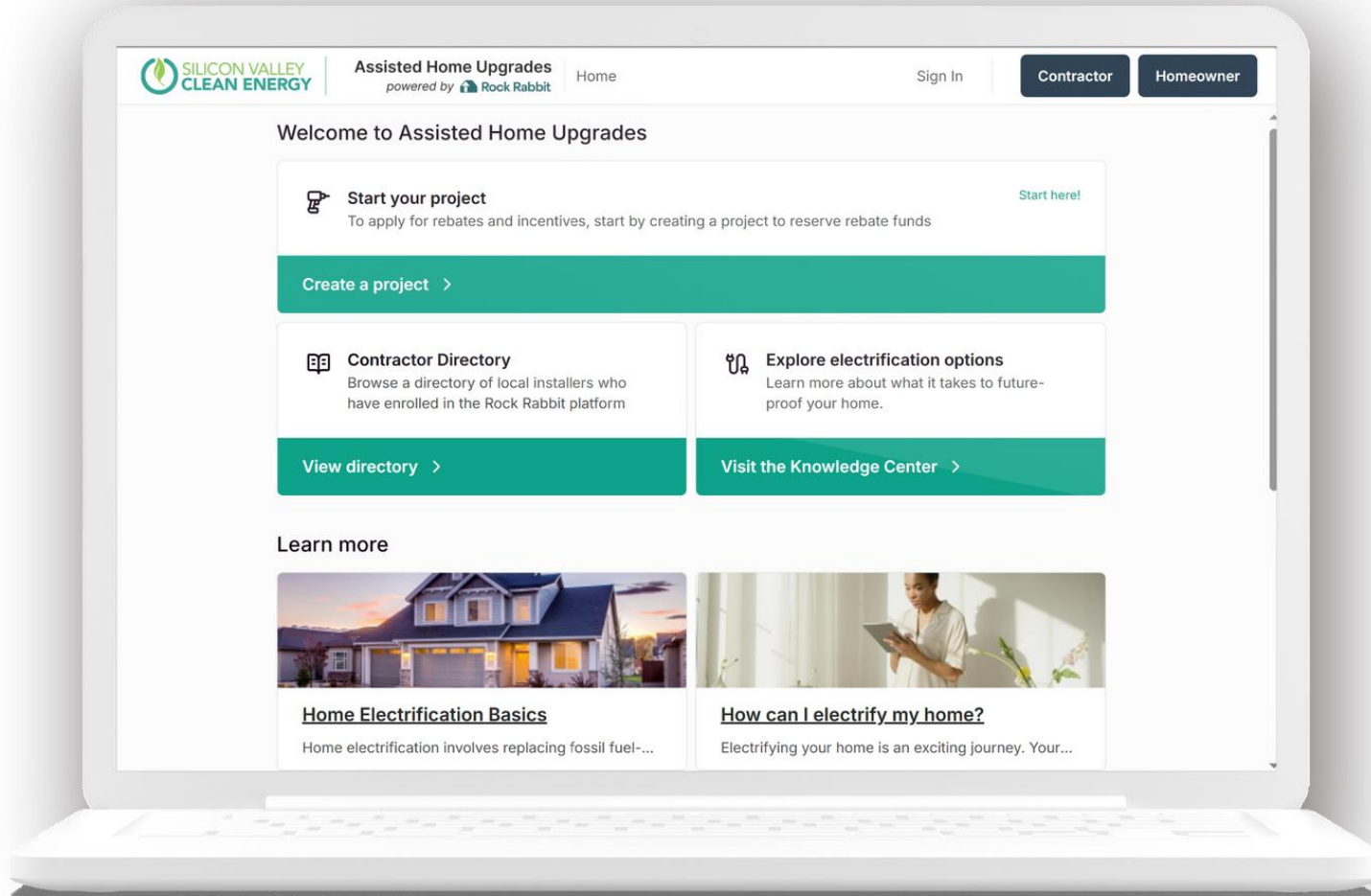
Simple Process

1. Reserve your rebate
2. Complete installation with permits
3. Submit your claim
4. Receive rebate check in the mail

Learn more:
svce.info/homerebates



Assisted Home Upgrades



Free online portal to streamline your home upgrade:



Request **free quotes** from participating contractors



Apply for eligible **rebates** all in one place

svce.info/ahu



Full-Service Home Upgrades

Hassle-free electric upgrades for your whole home.

[Learn more: svce.info/fullservice](https://svce.info/fullservice)



Get everything taken care of for you

- ✓ Assessment
- ✓ Installation
- ✓ Permits
- ✓ Rebates



Transparent, fixed pricing

No hidden fees or surprises. Plus, get rebates auto applied.



No-cost upgrades for income-qualified residents!

Owner or tenant's income <80% Area Median Income (\$162,400 for 4-person household)



Emergency Water Heater Replacement

Water heater broken? Get a heat pump water heater, fast.

[Learn more: svce.info/ewh](https://svce.info/ewh)



Contact us for same or next-day service

Get hot water restored within 48 hours.



Free loaner gas water heater provided, if needed

Our top priority is to restore hot water while we make the necessary upgrades for a heat pump.



Transparent, fixed pricing

With rebates starting at \$2,500.



No-cost upgrades for income-qualified residents!



Go Electric Advisor

Contact us for all your questions about going electric

- Technical Assistance
- Virtual Energy Audits
- Go Electric Plan Development
- Finding a Contractor
- Review Project Quotes
- Incentive Info and Applications
- Program Referrals

goelectric.svcleanenergy.org

Your trusted partner to go electric.

Go Electric Advisor is a free live service to help SVCE customers take the guesswork out of going electric. Our team of friendly, trained professionals can help at every step along the way – from simple questions to detailed plans.

[Call 833.243.4235](#) [Email Us](#) [Live Chat](#)

Energy Advisors are available Monday-Friday, 9am-5pm PST (excluding holidays)



Contractor Training Program

Preparing the workforce for electrification – more than 300 graduates!

- **Training Incentive** – Earn \$500 for completing the online training course
- **Collaboration Bonus** – Earn \$500 for each electrification appliance installed for SVCE customers, up to \$5,000 a year
- **Installation Incentive** – Receive up to \$5,000 for installing electric appliances in own home or business within the SVCE service area



FAQs

Can the grid handle more electric demand?

Yes, going electric has the following benefits:

1. Increased efficiency
2. Smarter appliances

Always happening - Effective planning and sufficient back-up resources



Learn more



svcleanenergy.org



info@svcleanenergy.org



1-844-474-7823



[@svcleanenergy](https://twitter.com/svcleanenergy)



An aerial photograph of a wind farm situated on rolling green hills. The image is overlaid with a semi-transparent blue filter. Several wind turbines are visible, with one in the foreground on the left and others scattered across the landscape. A winding road or path is visible on the hills. The text 'Back Up Slides' is prominently displayed in white, bold font in the upper left quadrant, preceded by a short white horizontal line.

Back Up Slides



Customer Billing

SVCE charges replace what PG&E would have charged for electric generation.



ENERGY STATEMENT

www.pge.com/MyEnergy

Account No: 1234567890-1
Statement Date: 06/04/2025
Due Date: 06/25/2025

Service For:

SPARKY JOULE
12345 ENERGY CT,
SUNNYVALE, CA 94087

Your Account Summary

Amount Due on Previous Statement	\$223.28
Payment(s) Received Since Last Statement	-223.28
Previous Unpaid Balance	<u>0.00</u>

Questions about your bill?

Monday-Friday 7 a.m.-7 p.m.
Saturday 8 a.m.-5 p.m.
Phone: 1-866-743-5000
www.pge.com/MyEnergy

Current PG&E Electric Delivery Charges	\$163.45
Silicon Valley Clean Energy Electric Generation Charges	\$71.41
Current Gas Charges	\$87.45

Total Amount Due by 06/25/2025 **\$322.31**

Ways to Pay

www.pge.com/waystopay

Important Messages

Your current gas rate Your gas usage is currently billed on a rate for single-family home or common-use area of a multi-family complex. If this is incorrect, please call us at 1-800-743-5000.

svcleanenergy.org/billing




Rate Comparison

SVCE rates are 1% less than the equivalent PG&E rate.

Competitive rate includes PG&E fees

svcleanenergy.org/residential-rates

Sample Residential Cost Comparison

GreenStart	Opt Out 	GreenPrime
43% RENEWABLE ENERGY*	23% RENEWABLE ENERGY	100% RENEWABLE ENERGY
\$138.80 PG&E ELECTRIC DELIVERY	\$138.80 PG&E ELECTRIC DELIVERY	\$138.80 PG&E ELECTRIC DELIVERY
\$39.31 ELECTRIC GENERATION	\$58.15 ELECTRIC GENERATION	\$42.94 ELECTRIC GENERATION
\$18.27 PG&E ADDED FEES	\$0 PG&E ADDED FEES	\$18.27 PG&E ADDED FEES
\$196.38 AVERAGE TOTAL COST	\$196.95 AVERAGE TOTAL COST	\$200.01 AVERAGE TOTAL COST

Based on typical residential usage of 491 kWh under the E-TOUC rate schedule at current PG&E rates, and SVCE rates effective January 2026. Actual costs will vary depending on usage, location, rate schedule, and other factors.