



City Council Redistricting

Community Presentation

February 4, 2021

District mapping, again?

- » Redistricting occurs every 10 years, after each Census
- » Sunnyvale's Council districts based on 2010 Census population data and must be updated

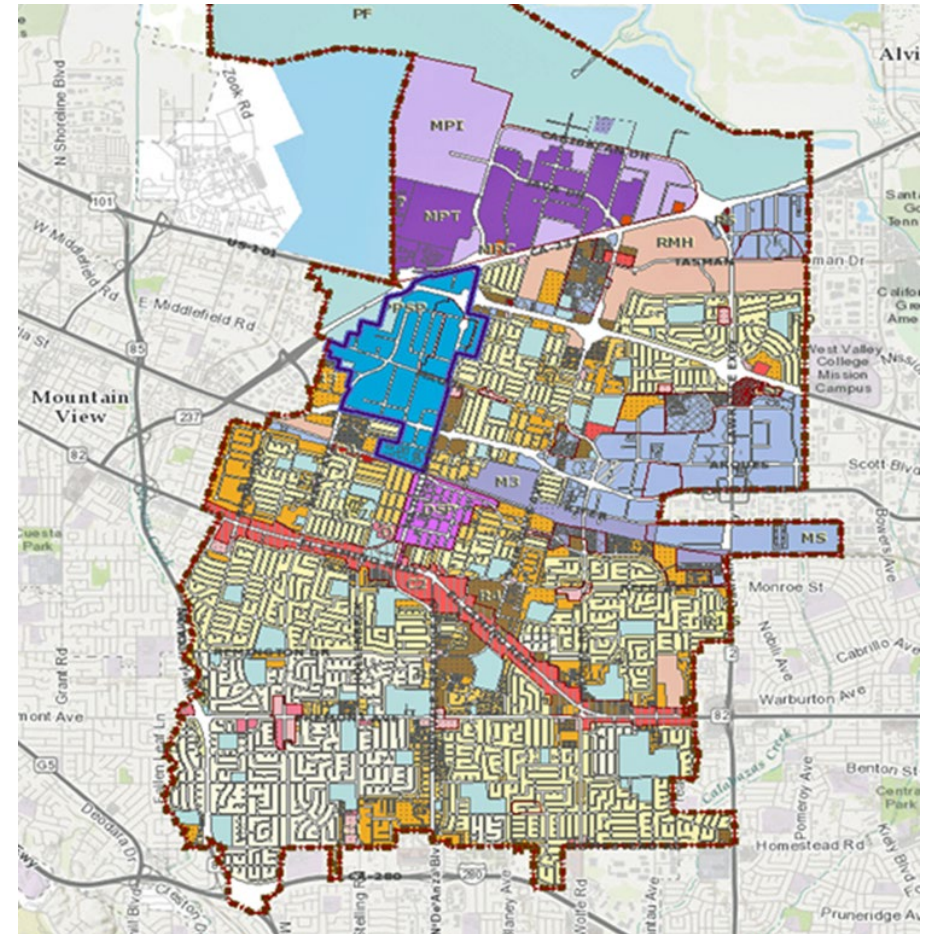


United States®
Census
2020

Redistricting Criteria

» Federal Criteria

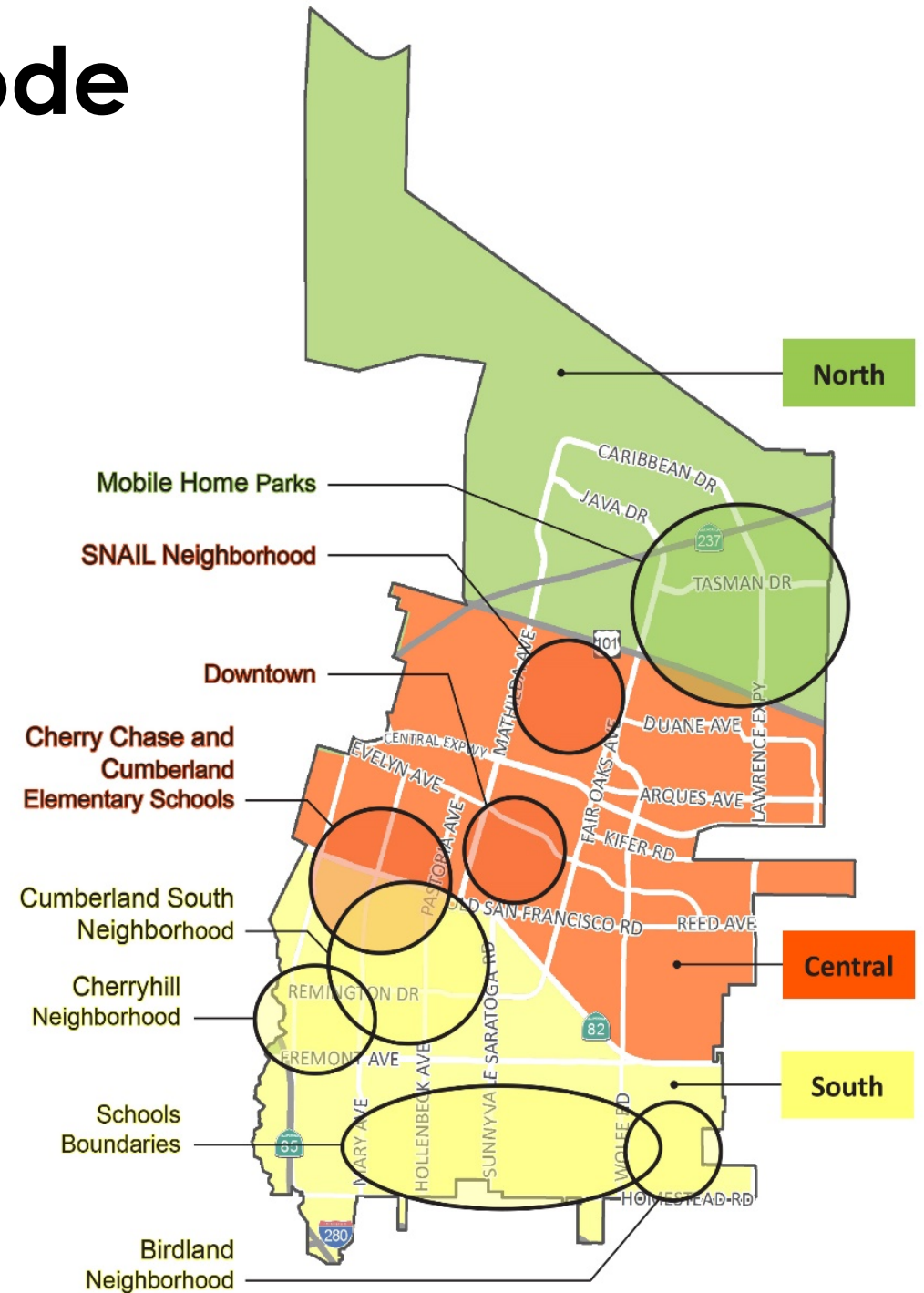
- Population equality
- Federal Voting Rights Act
- No racial gerrymandering



California Elections Code

» Priority order (AB 849):

1. Geographic contiguity
2. Neighborhoods/communities of interest
3. Easily identifiable boundaries
4. Compactness
5. No favoring or discriminating against a political party



Council Redistricting Goals

- » Conducting robust public engagement
- » Meeting all federal and state requirements
- » Keeping Council engaged and informed throughout the process
- » Preserving structure of current districts with minimal changes to meet population equality
- » Minimizing disenfranchisement

Community Engagement

» Community-driven Process

- Community education workshops on redistricting
- Public input on redistricting criteria (communities of interest)
- Training on mapping tools and technical assistance
- Reviewing community map proposals using iterative process
- Selection of preferred maps based on community input



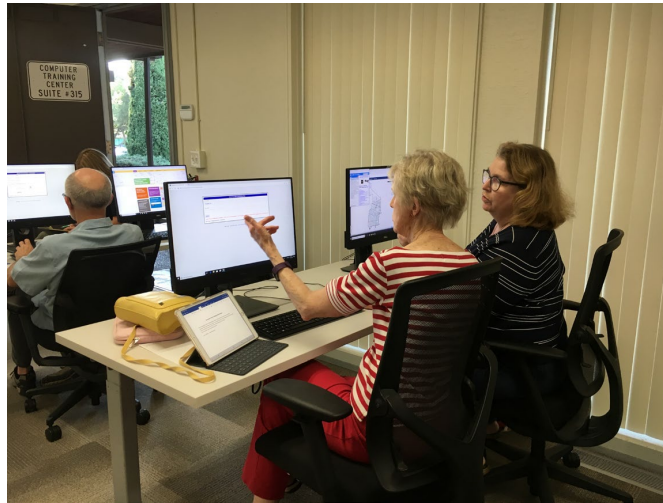
Public Process Ordinance

Council must adopt an ordinance establishing a public process for redistricting

- » Authority rests with Council
- » Council plans to appoint a Redistricting Commission that:
 - Holds hearings to receive public input
 - Recommends 3-5 draft maps to Council
- » Proposed map adoption process
 - Council can adopt one option by majority vote
 - Council may reject an option with a supermajority vote and request modifications by Commission

Timeline

- » **Phase 1 (January –March):** Adoption of public process for redistricting
- » **Phase 2 (March-June):** Commission selection and onboarding
- » **Phase 3 (July-December):** Community map drawing and selection



Sunnyvale.ca.gov/Redistricting

Explore

[Your Government Home](#)

[Elections](#)

[City Clerk](#)

[City Council](#)

[Codes and Policies](#)

[Jobs](#)

[Boards and Commissions](#)

[Advisory Committees](#)

[Redevelopment Successor Agency](#)

[Budget and Finance](#)

[Volunteer](#)

[ADA Compliance](#)

[Public Safety](#)

[Phone Directory](#)

[Meetings & Agendas](#)

[Access Sunnyvale](#)

[Current Topics](#)

[Events](#)

Redistricting

Sunnyvale must re-draw its six Council district boundaries using new 2020 Census data. This process is called redistricting. All jurisdictions with district-based election systems, like Sunnyvale, must redistrict after each Census. This keeps population counts within each district relatively equal to ensure equal representation. Sunnyvale adopted district boundaries in 2019 using 2010 Census total population counts.

We remain committed to having a robust public-led process. Help us determine Sunnyvale's new district boundaries:

- [Subscribe to Sunnyvale Elections](#) to stay informed
- Participate in public meetings

Contact

[Jaqui Guzman](#), Deputy City Manager, 408-730-7909

[Progress](#)

[Documents](#)

[Background](#)

Progress

Phase 1: Determine Redistricting Process

In Phase 1, City Council will determine the process for redistricting. Council can decide to lead the redistricting process or use the assistance of an advisory, independent, or quasi-independent commission made up of Sunnyvale residents.

Upcoming Meetings

- [Council Study Workshop - Jan. 12](#)
- Council Strategic Session - Jan. 28

Phase 2: Selecting Commission Members (optional)

If Council decides to create a Redistricting Commission, we will facilitate the recruitment and appointment of commission members based on Council direction.

Phase 3: Mapping

In Phase 3, we will train and provide the community with tools to draw district maps. The Council or Redistricting Commission (if authorized by Council) will adopt a district plan based on community input.



Sunnyvale

Council Hearing